

DAVIES PUBLISHING, INC.

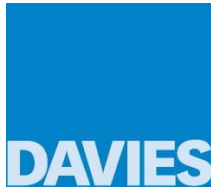
Ob/Gyn Sonography: An Illustrated Review

2nd edition

Study Alert

Updated August 2018

Jim Baun, BS, RDMS, RVT, FSDMS



Copyright 2016 © Davies Publishing, Inc.

Phone 626-792-3046

www.daviespublishing.com

On page 5, column 1, 10 lines from the top: The sentence beginning “In samples” SHOULD read:

In samples that have equivalent beta-hCG levels, the numeric result using the 1st IRP system is approximately double the result using the 2IS system.

On page 14, under column 1, second bullet point under “Sonographic Signs and Diagnostic Criteria,” SHOULD read:

- CRL = 15 mm or greater transabdominally, or 7 mm or greater transvaginally, with absent heartbeat

On page 16, Figure 1-19: The structure labeled 1 in the image identifies the decidua *basalis*, not the decidua *vera*.

On page 119, Figure 6-14A: In this schematic, the numeral 1 appearing contralateral to the 5 on the left-hand side *should be* a numeral 5 to indicate the internal carotid artery:

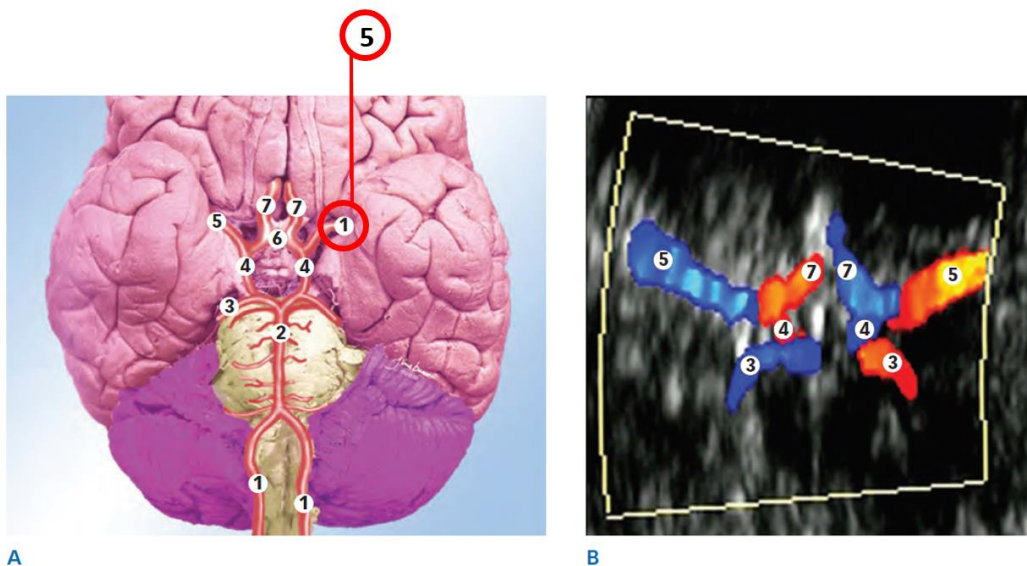


Figure 6-14. The circle of Willis. **A** Schematic showing location in brain and the vessels that define the circle: the posterior cerebral, posterior communicating, anterior cerebral, and anterior communicating arteries. **B** Correlative Doppler color flow image. 1 = vertebral artery, 2 = basilar artery, 3 = posterior cerebral artery, 4 = posterior communicating artery, 5 = internal carotid artery, 6 = anterior communicating artery, 7 = anterior cerebral artery.

On page 267, Chapter Review question number 13 SHOULD read:

13. Clinical and sonographic findings associated with unilateral renal agenesis include all of the following EXCEPT:
- A. Down Syndrome
 - B. Oligohydramnios
 - C. Potter sequence
 - D. Obstructive uropathies

On page 477, answer number 3 SHOULD read:

- B. Half the 1st IRP level

On page 481, answer to Chapter 10, question 13, SHOULD read:

13. B. Oligohydramnios

On page 482, answer to Chapter 12, question 7 should read:

7. C. Normal femur length measurements.

CME Quiz:

Question number 123 SHOULD read:

123. Which finding is NOT associated with unilateral renal agenesis?

- A. Oligohydramnios
- B. Down syndrome
- C. Potter sequence
- D. Obstructive uropathies