

Student **CONSULT**

Activate at studentconsult.com

Searchable Full
Text Online

Keith L. Moore T.V.N. Persaud Mark G. Torchia

Before we are **Born**

**Essentials of Embryology
and Birth Defects**

8th
EDITION

Includes
access to
unique
animations!



ELSEVIER
SAUNDERS

Before we are **Born**

Essentials of Embryology
and Birth Defects

8th Edition

Keith L. Moore,

MSc, PhD, FIAC, FRSM, FAAA

Professor Emeritus, Division of Anatomy, Department of Surgery
Faculty of Medicine, University of Toronto,

Former Professor and Head, Department of Anatomy, University of
Manitoba, Winnipeg, Manitoba, Canada

Former Professor and Chair, Department of Anatomy and
Cell Biology, University of Toronto, Toronto, Ontario, Canada

T.V.N. Persaud,

MD, PhD, DSc, FRCPath (Lond.), FAAA

Professor Emeritus and Former Head, Department of Human Anatomy
and Cell Science

Professor of Pediatrics and Child Health

Associate Professor of Obstetrics, Gynecology, and Reproductive Sciences,
Faculty of Medicine, University of Manitoba, Winnipeg, Manitoba,
Canada

Professor of Anatomy and Embryology, St. George's University, Grenada,
West Indies

Mark G. Torchia,

MSc, PhD

Associate Professor and Director of Development, Department of Surgery

Associate Professor, Department of Human Anatomy and Cell Sciences

Director, University Teaching Services, University of Manitoba,
Winnipeg, Manitoba, Canada

No part of this publication may be reproduced or transmitted in any form or by any means, electronic or mechanical, including photocopying, recording, or any information storage and retrieval system, without permission in writing from the publisher. Details on how to seek permission, further information about the Publisher's permissions policies and our arrangements with organizations such as the Copyright Clearance Center and the Copyright Licensing Agency, can be found at our website: www.elsevier.com/permissions.

This book and the individual contributions contained in it are protected under copyright by the Publisher (other than as may be noted herein).

Notices

Knowledge and best practice in this field are constantly changing. As new research and experience broaden our understanding, changes in research methods, professional practices, or medical treatment may become necessary.

Practitioners and researchers must always rely on their own experience and knowledge in evaluating and using any information, methods, compounds, or experiments described herein. In using such information or methods they should be mindful of their own safety and the safety of others, including parties for whom they have a professional responsibility.

With respect to any drug or pharmaceutical products identified, readers are advised to check the most current information provided (i) on procedures featured or (ii) by the manufacturer of each product to be administered, to verify the recommended dose or formula, the method and duration of administration, and contraindications. It is the responsibility of practitioners, relying on their own experience and knowledge of their patients, to make diagnoses, to determine dosages and the best treatment for each individual patient, and to take all appropriate safety precautions.

To the fullest extent of the law, neither the Publisher nor the authors, contributors, or editors, assume any liability for any injury and/or damage to persons or property as a matter of products liability, negligence or otherwise, or from any use or operation of any methods, products, instructions, or ideas contained in the material herein.

Previous editions copyrighted 2008, 2003, 1998, 1993, 1989, 1983, 1974

Library of Congress Cataloging-in-Publication Data

Moore, Keith L.

Before we are born : essentials of embryology and birth defects / Keith L. Moore, T.V.N. Persaud, Mark G. Torchia.—8th ed.

p. ; cm.

Includes bibliographical references and index.

ISBN 978-1-4377-2001-3 (pbk. : alk. paper) 1. Embryology, Human. 2. Abnormalities, Human. I. Persaud, T.V.N. II. Torchia, Mark G. III. Title.

[DNLM: 1. Embryonic Development. 2. Congenital Abnormalities. 3. Embryology—methods. 4. Fetal Development. QS 604]

QM601.M757 2013

612.6'4—dc23

2011022742

Executive Content Strategist: Madelene Hyde
Content Development Specialist: Christine Abshire
Publishing Services Manager: Pat Joiner-Myers
Project Manager: Marlene Weeks
Designer: Steven Stave

Printed in Canada

Last digit is the print number: 9 8 7 6 5 4 3 2

Working together to grow
libraries in developing countries

www.elsevier.com | www.bookaid.org | www.sabre.org

ELSEVIER BOOK AID INTERNATIONAL Sabre Foundation



Contents

- 1 Introduction to Human Development** 1
 - Importance of and Advances in Embryology 1
 - Descriptive Terms 5
 - Clinically Oriented Questions 5
- 2 Human Reproduction** 7
 - Reproductive Organs 7
 - Female Reproductive Organs 7
 - Male Reproductive Organs 10
 - Gametogenesis 10
 - Meiosis 10
 - Spermatogenesis 11
 - Oogenesis 14
 - Comparison of Male and Female Gametes 14
 - Female Reproductive Cycles 14
 - Ovarian Cycle 14
 - Menstrual Cycle 17
 - Transportation of Gametes 19
 - Oocyte Transport 19
 - Sperm Transport 19
 - Maturation of Sperms 20
 - Viability of Oocytes and Sperms 20
 - Clinically Oriented Questions 20
- 3 First Week of Development** 21
 - Fertilization 21
 - Phases of Fertilization 21
 - Results of Fertilization 23
 - Cleavage of Zygote 24
 - Formation of Blastocyst 24
 - Clinically Oriented Questions 27
- 4 Second Week of Development** 29
 - Formation of Amniotic Cavity and Embryonic Disc 30
 - Development of Chorionic Sac 32
 - Clinically Oriented Questions 33
- 5 Third Week of Development** 35
 - Gastrulation: Formation of Germ Layers 35
 - Primitive Streak 36
 - Notochordal Process and Notochord 36
 - Neurulation: Formation of the Neural Tube 38
 - Neural Plate and Neural Tube 38
 - Neural Crest Formation 39
 - Development of Somites 39
 - Development of Intraembryonic Coelom 40
 - Early Development of Cardiovascular System 40
 - Vasculogenesis and Angiogenesis 43
 - Development of Chorionic Villi 45
 - Clinically Oriented Questions 47
- 6 Development During Weeks Four to Eight** 49
 - Folding of Embryo 49
 - Head and Tail Folds 51
 - Lateral Folds 51
 - Germ Layer Derivatives 51
 - Control of Embryonic Development 51
 - Estimation of Embryonic Age 54
 - Highlights of Development during Weeks Four to Eight 54
 - Fourth Week 54
 - Fifth Week 56
 - Sixth Week 58
 - Seventh Week 58
 - Eighth Week 58
 - Clinically Oriented Questions 61
- 7 Fetal Period: The Ninth Week to Birth** 63
 - Highlights of Fetal Period 63
 - Nine to Twelve Weeks 64
 - Thirteen to Sixteen Weeks 65

Seventeen to Twenty Weeks	65	Positional Changes and Innervation of Diaphragm	94
Twenty-One to Twenty-Five Weeks	65	Clinically Oriented Questions	97
Twenty-Six to Twenty-Nine Weeks	67	10 Pharyngeal Apparatus	99
Thirty to Thirty-Eight Weeks	67	Pharyngeal Arches	99
Expected Date of Delivery	67	Pharyngeal Arch Components	100
Factors Influencing Fetal Growth	67	Pharyngeal Pouches	105
Procedures for Assessing Fetal Status	68	Derivatives of Pharyngeal Pouches	105
Ultrasonography	68	Pharyngeal Grooves	107
Diagnostic Amniocentesis	69	Pharyngeal Membranes	110
Chorionic Villus Sampling	69	Development of Thyroid Gland	110
Cell Cultures	69	Development of Tongue	112
Percutaneous Umbilical Cord Blood Sampling	69	Papillae and Taste Buds of Tongue	113
Magnetic Resonance Imaging	69	Nerve Supply of Tongue	113
Fetal Monitoring	69	Development of Salivary Glands	114
Alpha Fetoprotein Assay	70	Development of Face	114
Clinically Oriented Questions	70	Development of Nasal Cavities	118
8 Placenta and Fetal Membranes	71	Paranasal Sinuses	119
Placenta	71	Development of Palate	120
Decidua	72	Primary Palate	120
Development of Placenta	72	Secondary Palate	120
Fetomaternal Junction	72	Clinically Oriented Questions	125
Intervillous Space	72	11 Respiratory System	127
Amniochorionic Membrane	74	Development of Larynx	129
Placental Circulation	74	Development of Trachea	130
Parturition	79	Development of Bronchi and Lungs	130
Stages of Labor	79	Maturation of Lungs	131
Placenta and Fetal Membranes after Birth	80	Clinically Oriented Questions	135
Umbilical Cord	82	12 Alimentary System	137
Amnion and Amniotic Fluid	82	Foregut	137
Significance of Amniotic Fluid	84	Development of Esophagus	138
Umbilical Vesicle	84	Development of Stomach	138
Significance of Umbilical Vesicle	84	Development of Duodenum	141
Allantois	85	Development of Liver and Biliary Apparatus	142
Fetal Membranes in Multiple Pregnancies	85	Development of Pancreas	144
Twins and Fetal Membranes	85	Development of Spleen	146
Other Types of Multiple Births	87	Midgut	146
Clinically Oriented Questions	88	Rotation of Midgut Loop	146
9 Body Cavities, Mesenteries, and Diaphragm	89	Cecum and Appendix	149
Embryonic Body Cavity	89	Hindgut	149
Mesenteries	90	Cloaca	154
Division of Embryonic Body Cavity	90	Anal Canal	155
Development of Diaphragm	91	Clinically Oriented Questions	159
Septum Transversum	93	13 Urogenital System	161
Pleuroperitoneal Membranes	93	Development of Urinary System	161
Dorsal Mesentery of Esophagus	93	Development of Kidneys and Ureters	161
Muscular Ingrowth from Lateral Body Walls	93	Positional Changes of Kidneys	163

Changes in Blood Supply of Kidneys	163
Development of Urinary Bladder	167
Development of Urethra	169
Development of Suprarenal Glands	169
Development of Genital System	171
Development of Gonads	171
Development of Genital Ducts	176
Development of External Genitalia	177
Development of Inguinal Canals	184
Descent of Testes	187
Descent of Ovaries	187
Clinically Oriented Questions	188

14 Cardiovascular System 189

Early Development of the Heart and Blood Vessels	190
Development of Embryonic Veins	
Associated with the Heart	190
Pharyngeal Arch Arteries and Other Branches of Dorsal Aorta	191
Fate of Vitelline and Umbilical Arteries	191
Later Development of the Heart	191
Circulation through Primordial Heart	194
Partitioning of Primordial Heart	196
Changes in Sinus Venosus	200
Primordial Pulmonary Vein and Formation of Left Atrium	202
Partitioning of Primordial Ventricle	202
Partitioning of Bulbus Cordis and Truncus Arteriosus	203
Development of Cardiac Valves	203
Conducting System of Heart	205
Birth Defects of the Heart and Great Vessels	205
Derivatives of Pharyngeal Arch Arteries	211
Derivatives of First Pair of Pharyngeal Arch Arteries	211
Derivatives of Second Pair of Pharyngeal Arch Arteries	211
Derivatives of Third Pair of Pharyngeal Arch Arteries	211
Derivatives of Fourth Pair of Pharyngeal Arch Arteries	212
Fate of Fifth Pair of Pharyngeal Arch Arteries	212
Derivatives of Sixth Pair of Pharyngeal Arch Arteries	212
Pharyngeal Arch Artery Anomalies	213
Fetal and Neonatal Circulation	215
Fetal Circulation	215
Transitional Neonatal Circulation	216

Derivatives of Fetal Vascular Structures	217
Development of the Lymphatic System	220
Development of Lymph Nodes	222
Development of Spleen and Tonsils	222
Clinically Oriented Questions	222

15 Musculoskeletal System 223

Skeletal System	223
Development of Cartilage and Bone	225
Histogenesis of Cartilage	225
Histogenesis of Bone	225
Development of Joints	227
Fibrous Joints	227
Cartilaginous Joints	227
Synovial Joints	227
Development of Axial Skeleton	227
Development of Vertebral Column	227
Cartilaginous Stage of Vertebral Development	229
Bony Stage of Vertebral Development	229
Development of Ribs	230
Development of Sternum	230
Development of Cranium	230
Development of Appendicular Skeleton	233
Muscular System	236
Development of Skeletal Muscle	236
Development of Smooth Muscle	238
Development of Cardiac Muscle	238
Development of Limbs	239
Early Stages of Limb Development	239
Final Stages of Limb Development	240
Cutaneous Innervation of Limbs	241
Blood Supply to Limbs	242
Clinically Oriented Questions	242

16 Nervous System 247

Origin of Nervous System	247
Development of Spinal Cord	250
Development of Spinal Ganglia	252
Development of Spinal Meninges	252
Positional Changes of Spinal Cord	253
Myelination of Nerve Fibers	253
Birth Defects of Spinal Cord	253
Development of Brain	254
Brain Flexures	254
Hindbrain	255
Myelencephalon	255
Metencephalon	256
Choroid Plexuses and Cerebrospinal Fluid	256

Midbrain	257
Forebrain	257
Congenital Anomalies of Brain	261
Development of Peripheral Nervous System	265
Spinal Nerves	266
Cranial Nerves	266
Development of Autonomic Nervous System	269
Sympathetic Nervous System	269
Parasympathetic Nervous System	269
Clinically Oriented Questions	270

17 Eyes and Ears 271

Development of Eyes and Related Structures	271
Development of Retina	273
Development of Choroid and Sclera	276
Development of Ciliary Body	276
Development of Iris	276
Development of Lens	276
Development of Aqueous Chambers	277
Development of Cornea	277
Development of Eyelids	278
Development of Lacrimal Glands	278
Development of Ears	278
Development of Internal Ears	278
Development of Middle Ears	280
Development of External Ears	280
Clinically Oriented Questions	282

18 Integumentary System 283

Development of Skin	283
Epidermis	283
Dermis	284
Glands of Skin	285
Development of Hairs	286
Development of Nails	286
Development of Mammary Glands	287
Development of Teeth	288
Bud Stage of Tooth Development	288
Cap Stage of Tooth Development	289
Bell Stage of Tooth Development	289
Tooth Eruption	289
Clinically Oriented Questions	293

19 Human Birth Defects 295

Teratology: Study of Abnormal Development	295
Birth Defects Caused by Genetic Factors	296

Numerical Chromosomal Abnormalities	296
Structural Chromosomal Abnormalities	300
Birth Defects Caused by Mutant Genes	302
Birth Defects Caused by Environmental Factors	303
Principles of Teratogenesis	303
Human Teratogens	306
Environmental Chemicals as Teratogens	309
Infectious Agents as Teratogens	309
Radiation as a Teratogen	310
Maternal Factors as Teratogens	311
Mechanical Factors as Teratogens	311
Birth Defects Caused by Multifactorial Inheritance	311
Clinically Oriented Questions	311

20 The Cellular and Molecular Basis of Development 313

Intercellular Communication	314
Morphogens	314
Retinoic Acid	314
Transforming Growth Factor β /Bone Morphogenetic Protein	315
Hedgehog	315
Wnt/ β -Catenin Pathway	316
Receptor Tyrosine Kinases	316
Common Features	316
Regulation of Angiogenesis by Receptor Tyrosine Kinases	317
Notch-Delta Pathway	318
Transcription Factors	318
Hox/Homeobox Proteins	318
Pax Genes	319
Basic Helix-Loop-Helix (bHLH) Transcription Factors	319
Epigenetics	319
DNA Methylation	319
Acetylation	320
Summary of Common Signaling Pathways Used during Development	320

References and Suggested Reading 321

Answers to Clinically Oriented Questions 325

Index 335

Introduction to Human Development

Importance of and Advances
in Embryology 1

Descriptive Terms 5
Clinically Oriented Questions 5

Human development begins when an **oocyte** (ovum) from a female is fertilized by a **sperm** (spermatozoon) from a male. Development involves many changes that transform a single cell, the **zygote**, into a multicellular human being. The term *conceptus* refers to the entire products of conception, which includes the embryo from fertilization onward and its membranes (e.g., placenta). Embryology is concerned with the origin and development of a human being from a zygote to birth. The stages of development before birth are shown in Figures 1-1 and 7-3.

IMPORTANCE OF AND ADVANCES IN EMBRYOLOGY

The study of prenatal stages and the mechanisms of human development help us understand the normal relationships of adult body structures and the causes of congenital anomalies. Much of the modern practice of obstetrics involves applied or **clinical embryology**. Because some children have birth defects, such as spina bifida or congenital heart disease, the significance of embryology is readily apparent to pediatricians. Advances in surgery, especially in procedures involving the prenatal and pediatric age groups, have made knowledge of human development more clinically significant.

Rapid advances in molecular biology have led to the use of sophisticated techniques (e.g., **recombinant DNA technology**, **chimeric models**, **transgenics**, and **stem cell manipulation**) in research laboratories to explore such diverse issues as the genetic regulation of morphogenesis, the temporal and regional expression of specific genes, and the mechanisms by which cells are committed to form the various parts of the embryo. For the first time, researchers are beginning to understand how, when, and where selected genes are activated and expressed in the embryo during normal and abnormal development.

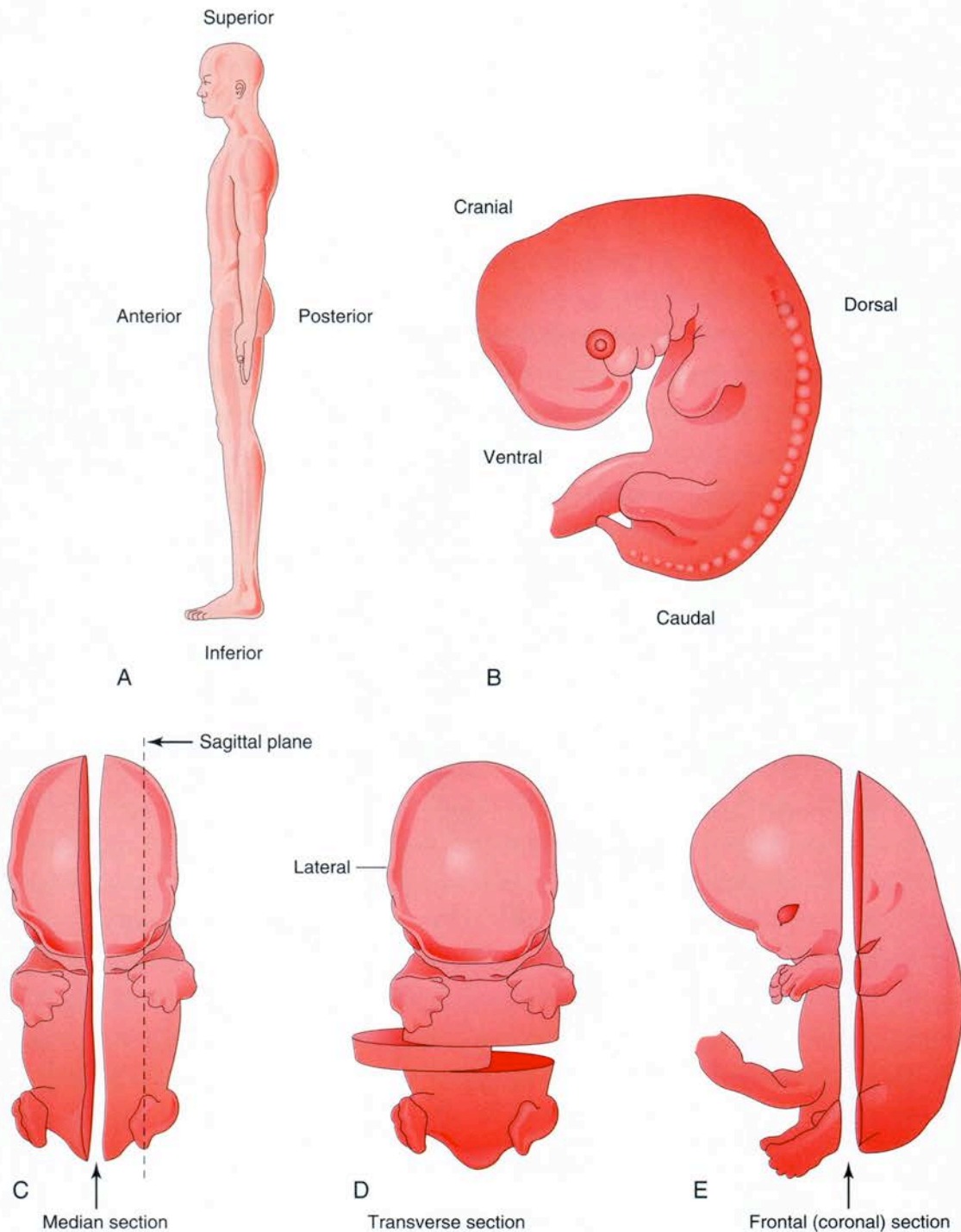


Figure 1-2 Illustrations of descriptive terms of position, direction, and planes of the body.

A, Lateral view of an adult in the anatomical position. **B**, Lateral view of a 5-week embryo. **C** and **D**, Ventral views of a 6-week embryo. The median plane is an imaginary vertical plane of section that passes longitudinally through the body, dividing it into right and left halves. A sagittal plane refers to any plane parallel to the median plane. A transverse plane refers to any plane that is at right angles to both the median and the frontal planes. **E**, Lateral view of a 7-week embryo. A frontal (coronal) plane is any vertical plane that intersects the median plane at a right angle and divides the body into front (anterior, or ventral) and back (posterior, or dorsal) parts. In describing development, it is necessary to use words denoting the position of one part to another or to the body as a whole. For example, the vertebral column develops in the dorsal part of the embryo and the sternum in the ventral part of the embryo.

The critical role of genes, **signaling molecules**, receptors, and other molecular factors in regulating early embryonic development is rapidly being delineated. In 1995, Edward B. Lewis, Christiane Nüsslein-Volhard, and Eric F. Wieschaus were awarded the Nobel Prize in Physiology or Medicine for their discovery of genes that control embryonic development. Such discoveries are contributing to a better understanding of the causes of spontaneous abortion and congenital anomalies.

In 1997, Ian Wilmut and colleagues were the first to produce a mammal (a sheep dubbed **Dolly**) by cloning using the technique of somatic cell nuclear transfer. Since then, other animals have been cloned successfully from cultured differentiated adult cells. Interest in human cloning has generated considerable debate because of social, ethical, and legal implications. Moreover, there is concern that cloning may result in an increase in the number of infants born with birth defects and serious diseases.

Human embryonic stem cells are pluripotential and capable of developing into diverse cell types. The isolation and culture of human embryonic and other stem cells may hold great promise for the development of molecular therapies.

DESCRIPTIVE TERMS

In anatomy and embryology, special terms of position, direction, and various planes of the body are used. Descriptions of the adult are based on the *anatomical*

position, the position in which the body is erect, the upper limbs are at the sides, and the palms are directed anteriorly (see Fig. 1-2A). The descriptive terms of position, direction, and planes used for embryos are shown in Figure 1-2B to E.

CLINICALLY ORIENTED QUESTIONS

1. What is the difference between the terms *conceptus* and *embryo*? What are the *products of conception*?
2. Why do we study human embryology? Does it have any practical value in medicine and other health sciences?
3. Physicians date a pregnancy from the first day of the last normal menstrual period, but the embryo does not start to develop until approximately 2 weeks later (see Fig. 1-1). Why do physicians use this terminology?

The answers to these questions are at the back of the book.

Before we are Born

8th
EDITION

Essentials of Embryology and Birth Defects

With Student Consult Online Access

Keith L. Moore, MSc, PhD, FIAC, FRSM, FAAA;
T. V. N. Persaud, MD, PhD, DSc, FRCPath (Lond.), FAAA;
and Mark G. Torchia, MSc, PhD

Zero in on the most essential concepts in human embryology and development! Concise and richly illustrated, this popular book delivers **the embryology knowledge you need** in a **highly efficient, reader-friendly manner**.

- **Understand all of the latest advances in embryology**, including normal and abnormal embryogenesis, causes of birth defects, and the role of genes in human development.
- **See how discoveries in molecular biology have affected clinical practice**, including the development of sophisticated new techniques such as recumbent DNA technology and stem cell manipulation.
- **Prepare for the USMLE Step 1** with clinical case presentations, highlighted in special boxes, that demonstrate how embryology concepts relate to clinical practice.
- **Access the full contents of the book online** at studentconsult.com—as well as **16 remarkable animations** that bring normal and abnormal embryological development to life, **downloadable images**, and hundreds of **additional review questions and answers** to test your mastery of the material.
- **Focus on the most need-to-know information** with coverage masterfully distilled from *The Developing Human, 9th Edition*, the more comprehensive and in-depth embryology textbook by Drs. Moore, Persaud, and Torchia.
- **Study efficiently and flexibly** thanks to the book's user-friendly full-color format and portable size.
- **Effectively prepare for exams** with review questions and answers at the end of each chapter.

studentconsult
.COM

Register and activate this title at studentconsult.com today...and bring this book to life!

- **Access the full text online** from any computer and perform **rapid searches** on any topic
- **View 16 animations** that illustrate normal and abnormal embryological development
- **Test your mastery of the material** with additional review questions and answers
- **Add your own notes and bookmarks**, and collect groups of images and tables to download for your notes
- **Follow Integration Links** to related bonus content from other **Student Consult** titles to help you see connections between diverse disciplines
- Reference all the **Student Consult** resources you own online in one place

Recommended
Shelving Classification
**Embryology,
Developmental
Anatomy**

ELSEVIER
SAUNDERS

elsevierhealth.com
studentconsult.com
usmleconsult.com

