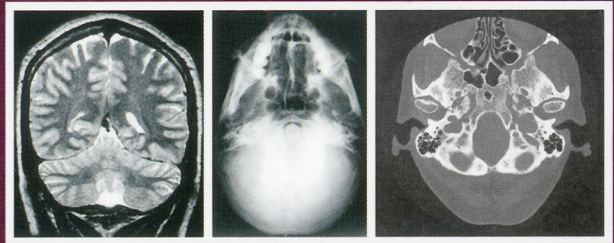


MERRILL'S

POCKET GUIDE to RADIOGRAPHY

Twelfth Edition

Eugene D. Frank
Bruce W. Long
Barbara J. Smith



MERRILL'S

POCKET GUIDE
to RADIOGRAPHY

Twelfth Edition

Eugene D. Frank

MA, RT(R), FASRT, FAEIRS

Retired Director, Radiography
Program

Riverland Community College

Austin, Minnesota;

Assistant Professor of Radiology,
Emeritus

Mayo Clinic College of Medicine

Rochester, Minnesota

Bruce W. Long

MS, RT(R)(CV), FASRT

Director and Associate Professor
Radiologic Imaging and Sciences
Programs

Indiana University School of Medicine
Indianapolis, Indiana

Barbara J. Smith

MS, RT(R)(QM), FASRT, FAEIRS

Instructor, Radiologic Technology
Medical Imaging Department
Portland Community College
Portland, Oregon

ELSEVIER
MOSBY

MERRILL'S POCKET GUIDE TO RADIOGRAPHY, 12E

ISBN: 978-0-323-07332-5

**Copyright © 2012, 2007, 2003, 1999, 1995, 1992, 1989 by Mosby, Inc.,
an affiliate of Elsevier Inc.**

All rights reserved. No part of this publication may be reproduced or transmitted in any form or by any means, electronic or mechanical, including photocopying, recording, or any information storage and retrieval system, without permission in writing from the publisher.

Publisher: Jeanne Olson
Senior Developmental Editor: Linda Woodard
Publishing Services Manager: Catherine Jackson
Project Manager: Carol O'Connell
Cover Designer: Amy Buxton
Text Designer: Amy Buxton

Printed in Canada

Last digit is the print number: 9 8 7 6 5 4 3 2 1

Notices

Knowledge and best practice in this field are constantly changing. As new research and experience broaden our understanding, changes in research methods, professional practices, or medical treatment may become necessary.

Practitioners and researchers must always rely on their own experience and knowledge in evaluating and using any information, methods, compounds, or experiments described herein. In using such information or methods they should be mindful of their own safety and the safety of others, including parties for whom they have a professional responsibility.

With respect to any drug or pharmaceutical products identified, readers are advised to check the most current information provided (i) on procedures featured or (ii) by the manufacturer of each product to be administered, to verify the recommended dose or formula, the method and duration of administration, and contraindications. It is the responsibility of practitioners, relying on their own experience and knowledge of their patients, to make diagnoses, to determine dosages and the best treatment for each individual patient, and to take all appropriate safety precautions.

To the fullest extent of the law, neither the Publisher nor the authors, contributors, or editors, assume any liability for any injury and/or damage to persons or property as a matter of products liability, negligence or otherwise, or from any use or operation of any methods, products, instructions, or ideas contained in the material herein.

Working together to grow
libraries in developing countries

www.elsevier.com | www.bookaid.org | www.sabre.org

ELSEVIER BOOK AID International Sabre Foundation

Merrill's Pocket Guide to Radiography concisely presents essential positioning information for the most frequently requested projections in a format designed for quick reference. This edition offers step-by-step explanations of methods to position the patient and body part for more than 150 of the most commonly requested radiography projections, including mobile.

Its format makes the *Pocket Guide* particularly easy to use, with each projection presented in a broadside, two-page spread. Each projection presentation includes the following information:

- Patient position
- Part position
- Central ray angulation
- Collimation
- kVp photograph of properly positioned patient
- Footnote that references information in the 11th edition of *Merrill's Atlas*

- CR information—a special digital radiography icon to alert the radiographer to projections that may need adjustment when CR or DR is used
- Exposure technique chart with space for writing manual and automatic exposure control (AEC) technical factors (a sample of this chart with instructions for completion may be found on the next page after the contents)
- Competency check-off for students—a special space in each projection for the instructor to fill in the date and sign off after the student has demonstrated competency for that projection
- Specific collimation sizing for use with DR systems

Features designed to enhance the utility of the *Pocket Guide* include section dividers with tabs, which make finding the beginning of each section easier, and abbreviations and external landmarks printed on the inside of the covers for quick reference.

Contents

Upper Limb, 1

Lower Limb, 71

Vertebral Column, 137

Thorax, 185

Abdomen, 219

Cranium, 275

Mobile Radiography, 331

APPENDIXES

SID Conversion, 354

Grid Conversion Factors, 356

Notes, 359

The pocket guide that keeps Merrill's essential information at your fingertips—anytime, anywhere!

MERRILL'S POCKET GUIDE TO RADIOGRAPHY, Twelfth Edition

Designed for **quick reference in the clinical environment**, this handy resource summarizes essential information for **150 of the most frequently requested projections** you'll encounter. It's precisely the information you need—keep it with you and keep *Merrill's* close at hand!

- Each procedure features bulleted, step-by-step instructions; high-quality images; and a chart with spaces to fill in the specific techniques used for a particular projection.
- New exposure index column optimizes your use of digital imaging systems.
- Specific collimation settings are provided for all projections done using DR systems.
- Computed radiography information helps you make the subtle adjustments necessary to obtain excellent results with CR.

Recommended Shelving
Classifications

**Imaging Sciences
Radiography**

ISBN 978-0-323-07332-5



ELSEVIER elsevierhealth.com
MOSBY

